

TYPICAL UNIT PLAN

2 BHK | WING A/C - UNIT 1 & 4
WING B/D - UNIT 2 & 3



2 BHK (RERA: 676 SQ.FT)	
Living + Dinning	10'2" x 17'3"
Kitchen	8'0" x 11'10"
Passage	12'0 x 3'5"
Bedroom 01	10'0" x 11'10"
C. Toilet	7'7" x 4'5"
Bedroom 02	10'2" x 13'0"
A.Toilet	6'3" x 6'9"



2 BHK WITH TERRACE | WING A/C - UNIT 1 & 4
WING B/D - UNIT 2 & 3



2 BHK WITH TERRACE PLAN (RERA: 689+ 45 SQ.FT)	
Living + Dinning	10'2" x 17'3"
Terrace	10'2" x 8"
Kitchen	8'0" x 11'10"
Passage	12'0 x 3'5"
Bedroom 01	10'0" x 11'10"
Terrace	18'0" x 1'8"
C.Toilet	7'7" x 4'5"
Bedroom 02	10'2" x 13'0"
A.Toilet	6'3" x 6'9"



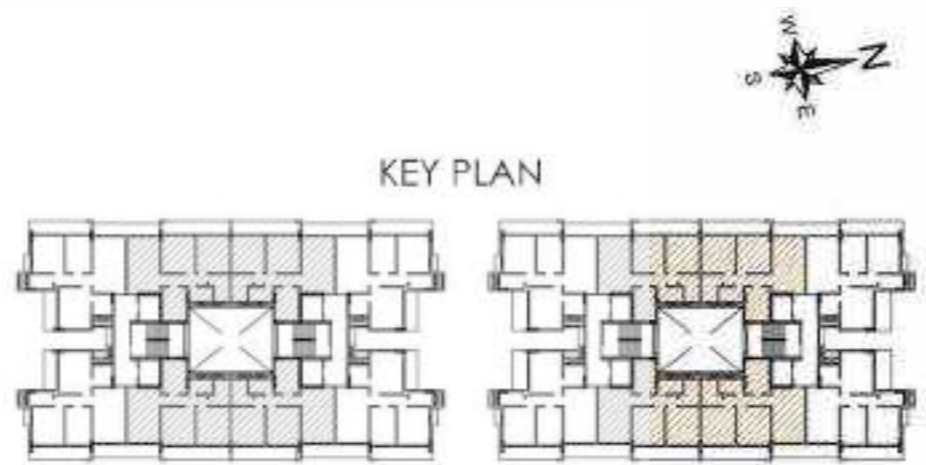
TYPICAL UNIT PLAN

2 BHK | WING A/C - UNIT 2 & 3
WING B/D - UNIT 1 & 4

2 BHK WITH TERRACE | WING A/C - UNIT 2 & 3
WING B/D - UNIT 1 & 4



2 BHK (RERA: 674 SQ.FT)	
Living + Dinning	10'2" x 17'3"
Kitchen	7'9" x 10'6"
Passage	11'6" x 3'6"
Bedroom 01	10'6" x 11'10"
C. Toilet	7'7" x 4'3"
Bedroom 02	10'6" x 11'10" 2'11" x 3'11"
A.Toilet	4'11" x 8'2" 1'8" x 3'5"



2 BHK WITH TERRACE PLAN (RERA: 686+ 45 SQ.FT)	
Living + Dinning	10'2" x 17'3"
Terrace	10'2" x 8"
Kitchen	7'9" X 10'6"
Passage	11'6" X 3'6"
Bedroom 01	10'6" X 11'10"
Terrace	2'11" x 1'8"
C.Toilet	7'7" X 4'3"
Bedroom 02	10'6" X 11'10" 2'11" X 3'11"
A.Toilet	4'11" x 8'2" 1'8" x 3'5"

